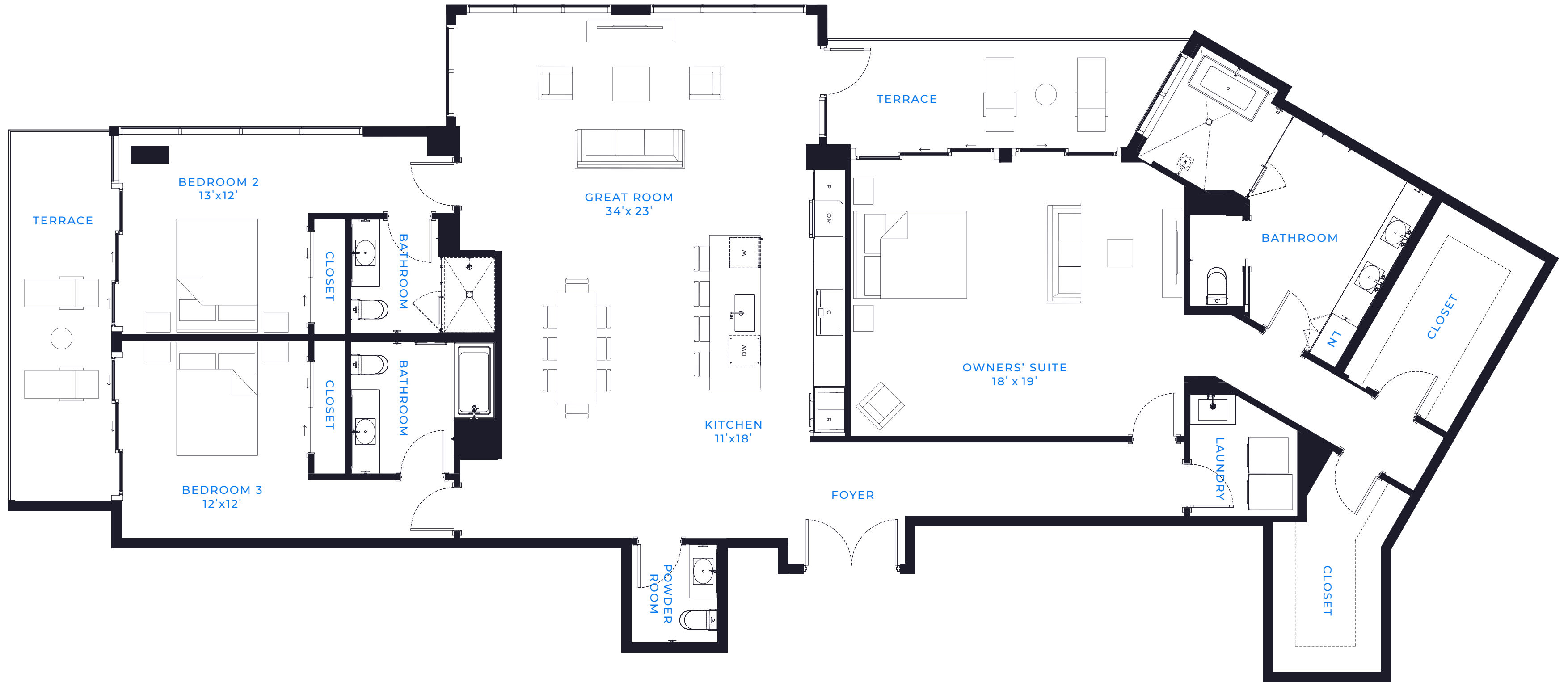


PENTHOUSE 2F

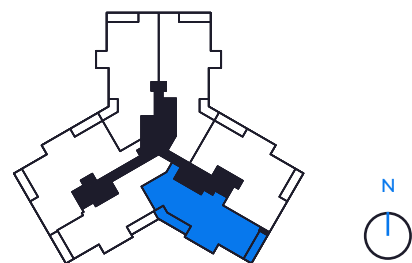
# PENTHOUSE 2F

FLOOR 17



3 BED / 3.5 BATH

AIR CONDITIONED: 2,713 SQ. FT.  
TERRACE: 392 SQ. FT.  
TOTAL LIVING SPACE: 3,105 SQ. FT.





# MARINA POINTE

(813) 930 - 9800

[INFO@MARINAPOINTE.COM](mailto:INFO@MARINAPOINTE.COM)

[MARINAPOINTE.COM](http://MARINAPOINTE.COM)



ORAL REPRESENTATIONS SHOULD NOT BE RELIED UPON AS CORRECTLY STATING THE REPRESENTATIONS OF THE DEVELOPER. FOR CORRECT REPRESENTATIONS, MAKE REFERENCE TO THIS BROCHURE AND TO THE DOCUMENTS REQUIRED BY SECTION 718.503, FLORIDA STATUTES, TO BE FURNISHED BY A DEVELOPER TO A BUYER OR LESSEE.

Sketches and illustrations are artist's renderings. Details and field variations are subject to changes. All dimensions are approximate and all floor plans and development plans are subject to change. Community features, amenities and pricing are approximate and subject to change without notice. Developer reserves the right to replace with items of equal value. There are various methods for calculating the total square footage of a condominium unit, and depending on the method of calculation, the quoted square footage of a condominium unit may vary by more than a nominal amount. The dimensions stated in this brochure are measured to the exterior boundaries of the exterior walls and the centerline of interior demising walls and, in fact, are larger than the dimensions of the "Unit" as defined in the Declaration of Condominium for Marina Pointe which is measured using interior measurements.